

# CHANCE<sup>®</sup> LADDER MONITOR KIT

## Operating & Servicing Instructions:

For EHV Microampere Measurement on Bare hand Equipment

### Introduction

The Chance Ladder Monitor Kit is used in connection with EHV Bare hand maintenance procedures to detect microampere leakage on the ladder before it is placed into use. This is accomplished by connecting the meter to the ladder, and taking readings as the ladder is placed in contact with the conductor.

It is recommended that readings be taken periodically during work progress to assure safe working conditions, which could be altered by a change in the atmosphere.

The kit consists of a 200 micro-amp ammeter, three hose clamps, and connector cable assembly. The mounting bracket serves to connect the meter to ground. Instruction drawings for field assembly are also included in the kit.

Note: Operating instructions included.

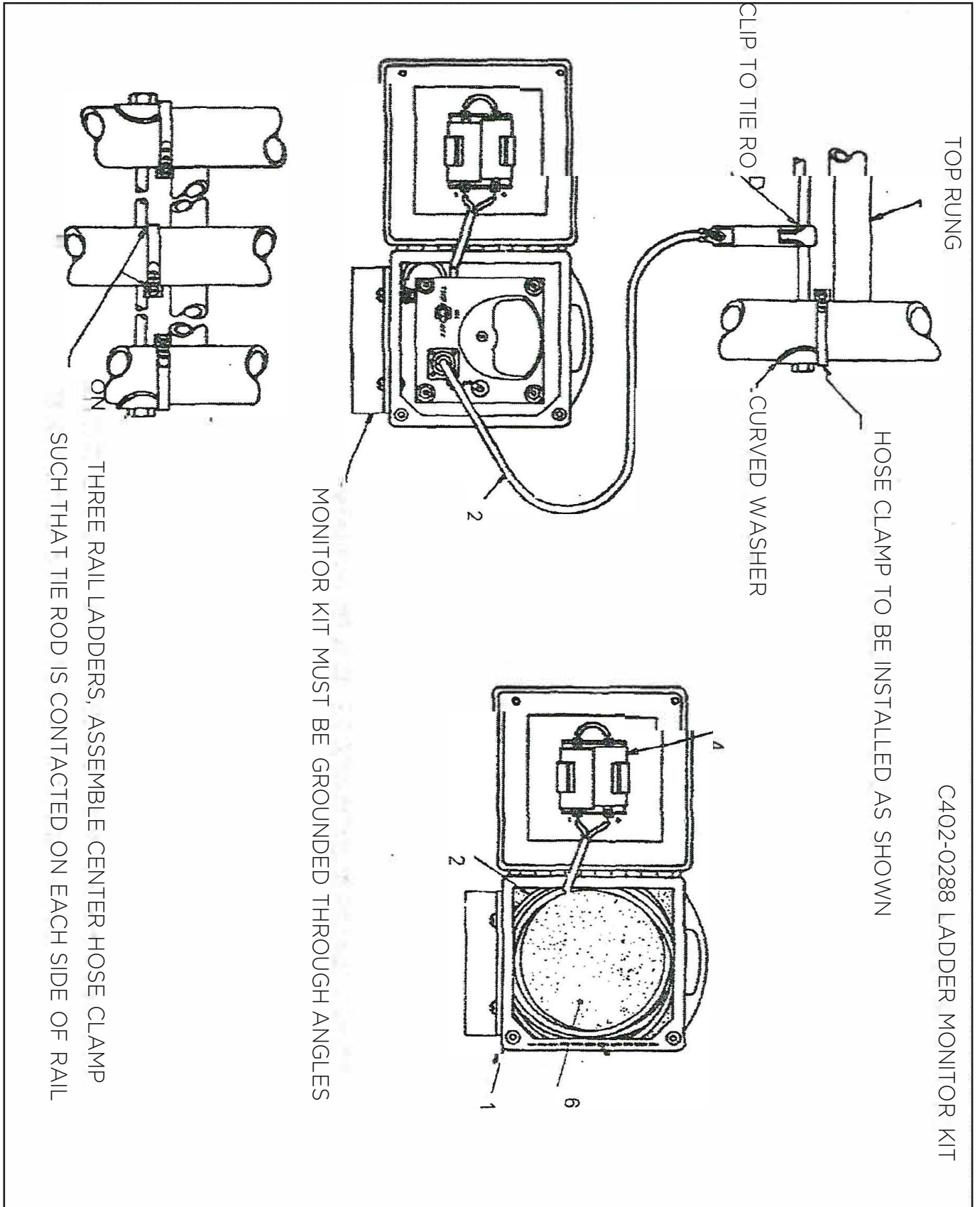


**CHANCE<sup>®</sup>**

Hubbell Power Systems, Inc.  
210 N. Allen St  
Centralia, MO 65240

(573) 682-5521  
[www.hubbellpowersystems.com](http://www.hubbellpowersystems.com)

**LADDER MONITOR KIT DIAGRAM**



**CHANCE®**

# **INSTRUCTION MANUAL FOR LADDER MONITOR KIT**

## **INSTALLING LADDER MONITOR KIT**

1. PLACE LADDER ON LINE
2. INSTALL LADDER MONITOR KIT TO A GROUND OR GROUNDED STRUCTURE SUCH THAT WHEN THE SET SCREWS ARE TIGHTEND THE CASE WILL BE GROUNDED.
3. ATTACH CLIP TO LADDER TIE ROD. (CAUTION - BE SURE MONITOR IS IN THE "OFF" POSITION WHEN CONTACT IS MADE WITH LADDER ON ENERGIZED CONDUCTOR.)
4. AFTER CONTACT IS MADE. PLACE SWITCH IN THE "ON" POSITION TO TEST THE LADDER. IF THE METER SHOWS OVER 100 MICTROAMPERES LEAKAGE DOWN THE LADDER. THE LADDER IS QUESTIONABLE FOR USE.
5. CAUTION  
SHOULD THE METER READ LESS THAN WOULD BE EXPECTED FOR THE PARTICULAR VOLTAGE THE LADDER MONITOR KIT SHOULD BE THOROUGHLY TESTED TO INSURE IT IS FUNCTIONING PROPERLY (SHORTED DIODES IN THE RECTIFIER BRIDGE COULD CAUSE ERRONEOUSLY LOW LEAKAGE READINGS.

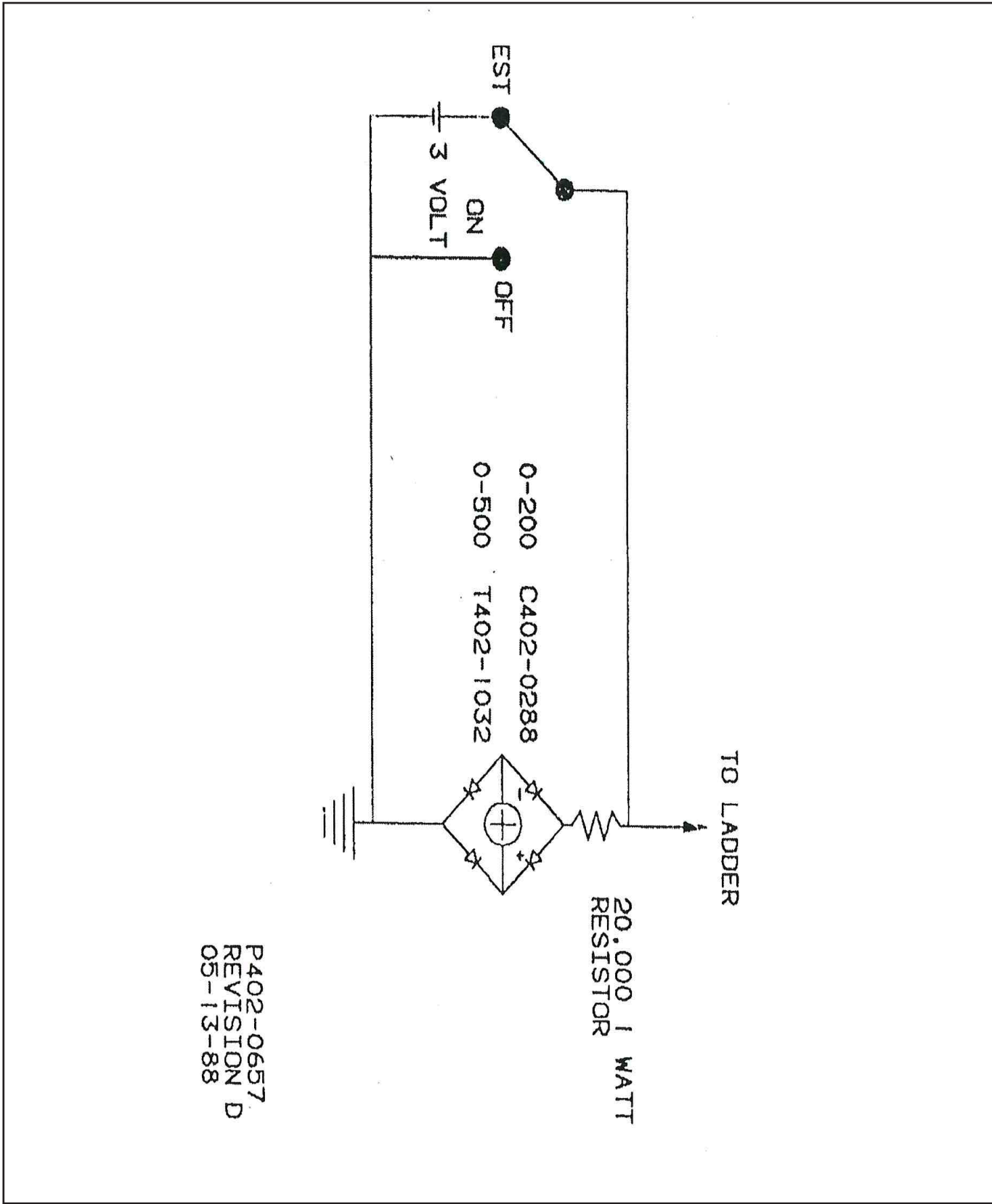
## **TESTING LADDER MONITOR KIT**

THE MONITOR CAN BE TESTED ON THE GROUND OR ON A TOWER OR POLE. BEFORE CABLE CLIP IS CONNECTED TO LADDER. PLACE MONITOR SWITCH IN THE "TEST" POSITION. DO NOT CONNECT TO LADER WHEN TESTING MONITOR. WHEN TESTING THEMONITOR KIT THE METER SHOULD SHOW APPROXIMATELY 100 MICROAMPERES DEFLECTION. DO NOT HOLD THE SWITCH ON TEST TOO LONG AS THIS WILL CAUSE THE BATTERIES TO RUN DOWN. IF THE BATTERIES ARE TOO LOW THE METER WILL NOT SHOW HALF SCALE DEFLECTION.

TO TEST THE ENTIRE CIRCUIT. INCLUDING THE LEADS. PLACE THE SWITCH IN THE "ON" POSTION AND TOUCH THE CABLE CLIP TO THE TOP BATTERY CONNECTION OF THE BATTERY HOLDER. THE METER SHOULD SHOW APPROXIMATELY 100 MICROAMPERES DEFLECTION. REVERSE BATTERIES (CHANGING PULARITY OF TOP BATTERY CONNECTION) AND REPEAT ABOVE TEST. METER SHOULD READ THE SAME. REGARDLESS OF BATTERY POLARITY. IF METER READINGS ARE NOT THE SAME. RECTIFIER MAY BE FAULTY AND THE LADDER MONITOR KIT MUST NOT BE USED UNTIL REPAIRED.



# LADDER MONITOR KIT DRAWING



**CHANCE**

**FOR PARTS SERVICE OR REPAIR, CONTACT:**

M. W. BEVINS COMPANY  
9903 EAST 54TH STREET  
TULSA, OKLAHOMA 74146  
(918) 627-1273  
FAX: (918) 627-1294  
www .mwbevinsco.com  
PARTS LIST FOR THE C402-0288 LADDER

PART NUMBER	DESCRIPTION	QTY
419	6" x 6" x 1" FOAM	1
6023	BATTERY"D" CELL	2
6024	INSTRUCTION MANUAL	1
6031	HOSE CLAMP	3
E402-0656	MONITOR SUB-ASS'Y	1
E402-0712	CONNECTOR CABLE ASS'Y	1
PP402-0669	PRINT OF C402-0288	1

---

**For product inquiries, please contact your local sales representative or customer service representative.**



**CHANCE®**

©2019 Hubbell Incorporated.  
Because Hubbell has a policy of continuous product improvement,  
we reserve the right to change design and specifications without notice.  
Printed in the U.S.A. | TD\_09\_200\_E